

THE JOURNAL OF THE COMMUNITY PRACTITIONERS' AND HEALTH VISITORS' ASSOCIATION

COMMUNITY PRACTITIONER

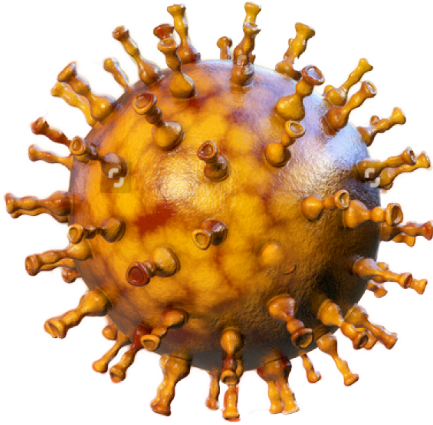
JAN / FEB 2024

COMMUNITYPRACTITIONER.CO.UK

WHY ARE SO
MANY YOUNG
PEOPLE UNHAPPY
RIGHT NOW?

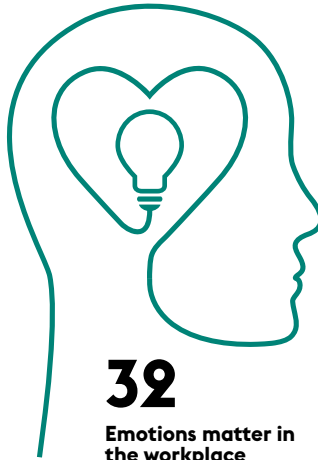
CONTENTS

January / February 2024 | Vol 97 | No 01



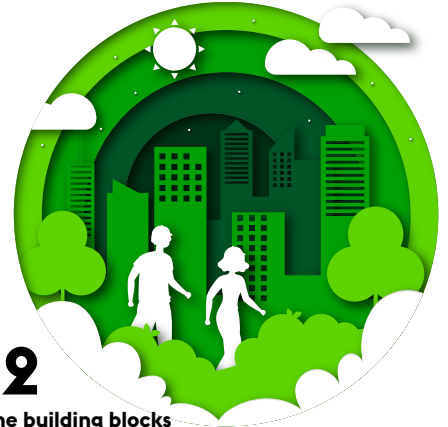
34

The latest facts on chickenpox



32

Emotions matter in the workplace



12

The building blocks of health



44

Understanding eating disorders



22

COVER STORY



28

You can now apply for a 2024 MacQueen bursary in its anniversary year

NEWS

- 7 **NEWS IN NUMBERS**
Your quick guide to the stats that count this issue
- 8 **PUBLIC HEALTH**
Significant reports and new campaigns
- 10 **PROFESSIONAL UPDATE**
Your latest round-up of sector news

- 12 **BIG STORY**
The building blocks of health and the importance of preventative spending

REFLECTION

- 16 **ONE-TO-ONE**
Northern Ireland's new Commissioner for Children and Young People, Chris Quinn, on why actions matter

- 19 **LET'S BRING A NEW FACE TO THE SERVICE**
A HV gives her thoughts on innovation

- 20 **MEET THE EXECUTIVE**
Find out more about your CPHVA Executive

FEATURES

- 22 **COVER STORY**
Why are so many young people unhappy right

now, and struggling with their mental health? A look at what can be done to help

PRACTICE

- 28 **MACQUEEN BURSARIES**
25 years of professional support: how to apply
- 32 **EMOTIONAL INTELLIGENCE**
Supporting supervision

PRACTICE

34 BACK TO BASICS

Chickenpox: the latest updates, and how to best help clients

THE EVIDENCE

38 RESEARCH DIGEST

A round-up of research news from across the globe, including the mental health of unpaid carers; the food insecurity and dementia link; and navigating parents' technology use

40 THE HEALTH VISITOR'S ROLE IN ENGAGING AND SUPPORTING FATHERS IN THE PROMOTION OF BREASTFEEDING

Kyra Wasfy conducts a literature review on the experiences of fathers in helping their partners who are breastfeeding

PROFESSIONAL PAUSE

44 TIME TO ACT

Tom Quinn from charity Beat reveals the latest information on eating disorders, and how you can help young people when it counts

WELCOME

from your editor, Aviva



As we enter a new year, the passion of professionals in healthcare to improve lives feels as strong as ever, despite lingering challenges from all directions. Take Northern Ireland's new Commissioner for Children and Young People, Chris Quinn. His drive to help young people no matter what is clearly evident on [page 16](#). While a health visitor of 36+ years tells us on [page 19](#) how she believes CP services can evolve and innovate further to better help families as well as the actual professions.

If you're starting the year with a renewed vigour to progress professional projects you feel passionate about, head to [page 28](#) where you'll find the details of how to apply for a MacQueen bursary, as well as its inspiring history. In fact there are two chances to enter in 2024, and to benefit professionally and personally in the process. There's also the Unite-CPHVA conference to look forward to in November (see [page 6](#)).

The very real struggles of the clients you serve of course remain, and reveal just how much CPs are needed. Our cover story looks at why so many young people are unhappy and what can be done to help ([page 22](#)).

Unsurprisingly prevention and investment are a big part of the answer and also form the basis of our Big story this issue (see [page 12](#)).

As always, let us know what's happening for you in practice. See how the CPHVA Executive can help you too ([page 20](#)).



JOIN THE CONVERSATION



aviva@communitypractitioner.co.uk



twitter.com/CommPrac

COMMUNITY PRACTITIONER

Unite-CPHVA

Existing Unite-CPHVA members with queries relating to their membership should contact 0845 850 4242 or see unitetheunion.org/contact_us.aspx for further details.

To join Unite-CPHVA, see unitetheunion.org

Unite-CPHVA is based at
128 Theobald's Road London WC1X 8TN
020 3371 2006

Community Practitioner

Unite-CPHVA members receive the journal free. Non-members and institutions may subscribe to receive it.

Non-member subscription rates

Individual (single use)	£75
Institution (single use)	£159
Unlimited	£249

Subscription enquiries may be made to
01580 883844, cp@c-cms.com

The journal is published on behalf of
Unite-CPHVA by Media Shed,
West Wing, Beater House, Turkey Mill,
Ashford Road, Maidstone, Kent
ME14 5PP

Editorial advisory board

Obi Amadi Pippa Atkinson
Barbara Evans Meury Febres
Laura Gibney Ethel Rodrigues
Christopher Sweeney Janet Taylor

Editorial team

Editor **Aviva Attias**
Assistant editor **Lauren Billings**
Head of content **Jane King**
Sub-editor **Ian McMillan**
Executive editor (Unite) **Ethel Rodrigues**
Clinical editor **Pippa Atkinson**
Lead designer **Mark Collins**
Publisher **Ian Carter**
ianc@media-shed.co.uk

Advertising

Kessia Miller 020 3745 6815
kessia@media-shed.co.uk

Recruitment

Tim Porter 020 3137 2406
timp@media-shed.co.uk

Unite health sector officers

National officers **Jacalyn Williams**
and **Colenzo Jarrett-Thorpe**
Lead professional officers **Ethel Rodrigues**
Gavin Fergie **Obi Amadi** **Jane Beach**
and **Dave Munday**

© 2024 Community Practitioners' and
Health Visitors' Association
ISSN 1462-2815

The views expressed do not necessarily
represent those of the editor nor of
Unite-CPHVA.

Paid advertisements in the journal do
not imply endorsement of the products
or services advertised.

Any Unite-CPHVA member wishing to
change their contact details must get
in touch with their local Unite office.

