

THE JOURNAL OF THE COMMUNITY PRACTITIONERS' AND HEALTH VISITORS' ASSOCIATION

# COMMUNITY PRACTITIONER

NOV / DEC 2023

COMMUNITYPRACTITIONER.CO.UK



## ARTIFICIAL INTELLIGENCE IN **HEALTHCARE** FRIEND OR FOE?

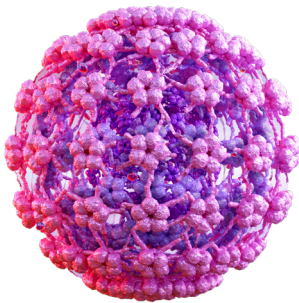
# CONTENTS

November / December 2023 | Vol 96 | No 05



24

A pressing need to review assessments for newborns

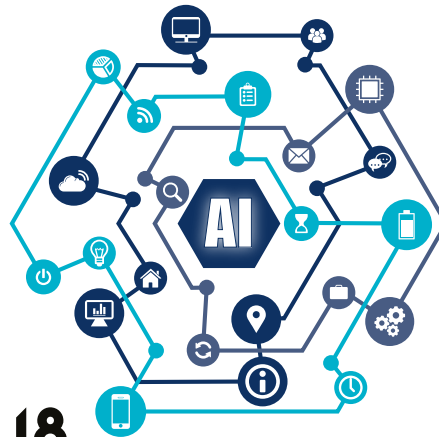


32

The facts: human papillomavirus

34

Uniting to help young people via social prescribing



18

COVER STORY

**MOVING  
FORWARDS**



14

The latest on CP pay

## NEWS

- 6 **PUBLIC HEALTH**  
Significant reports and new campaigns
- 8 **PROFESSIONAL UPDATE**  
Your latest round-up of sector news
- 9 **NEWS IN NUMBERS**  
Your quick guide to the stats that count this issue

- 10 **BIG STORY**  
Obesity – is there an app for that? Exploring how effective a digital programme can be

## REFLECTION

- 14 **RIGHTS AT WORK**  
An important update on CP pay and working conditions across the UK from Unite's Colenzo Jarrett-Thorpe

## FEATURES

- 18 **COVER STORY**  
Artificial intelligence (AI) in healthcare – friend or foe? AI explained in real terms

## PRACTICE

- 24 **URGENT: INCLUSIVE ASSESSMENTS FOR NEWBORNS**  
Detailing a vital report,

including immediate recommendations

- 28 **A MILITARY FOCUS**  
Overcoming the challenges of assessing children with additional needs in a military community

- 32 **BACK TO BASICS**  
Human papillomavirus (HPV): what you need to know, and how to best help and inform clients

## PRACTICE

### 34 MAKING CONNECTIONS

The benefits of a collaborative social prescribing service for young people and their mental health

## THE EVIDENCE

### 38 RESEARCH DIGEST

A round-up of research news from across the globe, including homelessness and sudden death, the harm of childhood verbal abuse, and access to green spaces

### 40 THE LIVED EXPERIENCE OF MOTHERS' COPING MECHANISMS IN THE FACE OF MENTAL ILLNESS

Diana Skibniewski-Woods details an interpretative phenomenological analysis study exploring how women coped

## PROFESSIONAL PAUSE

### 44 BUILDING A MENTALLY HEALTHIER UK

Ed Davie from Centre for Mental Health on how we can all improve people's lives by focussing on preventing mental ill health

# WELCOME

from your editor, Aviva



This issue is wonderfully packed with in-depth practitioner content, and as we approach the end of 2023, now is the perfect time to consider what projects or insights you might like to share in the new year ahead.

As for now, you'll find CPHVA honorary vice-president Gina Awoko Higginbottom and colleagues writing about the urgent need for inclusive neonatal assessments (page 24); a HV on overcoming challenges in helping British military children and families living in Brunei (page 28); and a Queen's Nurse on how school nursing teams can get involved with social prescribing to help young people (page 34).

Meanwhile our cover feature this issue explores artificial intelligence (AI) in healthcare. Whether you fear it, welcome it, or need to know much more about it, this piece will help to inform you of what AI could look like in practice, what's going on right now, issues to consider and the wider picture (see page 18).

On the subject of technology, our Big story (page 10) looks at the use of apps to help tackle obesity, as well as how poverty is affecting healthy eating.

Do turn to page 14 for a vital update on CP pay and working conditions.

Please let us know your thoughts on all the content.

Wishing you all a peaceful festive season, and look forward to hearing from you soon.



## JOIN THE CONVERSATION



aviva@communitypractitioner.co.uk



twitter.com/CommPrac

# COMMUNITY PRACTITIONER

### Unite-CPHVA

Existing Unite-CPHVA members with queries relating to their membership should contact 0845 850 4242 or see [unithetheunion.org/contact\\_us.aspx](http://unithetheunion.org/contact_us.aspx) for further details.

To join Unite-CPHVA, see [unithetheunion.org](http://unithetheunion.org)

Unite-CPHVA is based at 128 Theobald's Road London WC1X 8TN O20 3371 2006

### Community Practitioner

Unite-CPHVA members receive the journal free. Non-members and institutions may subscribe to receive it.

### Non-member subscription rates

Individual (single use)	£75
Institution (single use)	£159
Unlimited	£249

Subscription enquiries may be made to 01580 883844, [cp@c-cms.com](mailto:cp@c-cms.com)

The journal is published on behalf of Unite-CPHVA by Media Shed, West Wing, Beater House, Turkey Mill, Ashford Road, Maidstone, Kent ME14 5PP

### Editorial advisory board

Obi Amadi Pippa Atkinson  
Barbara Evans Meury Febres  
Laura Gibney Ethel Rodrigues  
Christopher Sweeney Janet Taylor

### Editorial team

Editor **Aviva Attias**  
Assistant editor **Lauren Billings**  
Head of content **Jane King**  
Sub-editor **Ian McMillan**  
Executive editor (Unite) **Ethel Rodrigues**  
Clinical editor **Pippa Atkinson**  
Lead designer **Mark Collins**  
Publisher **Ian Carter**  
[ianc@media-shed.co.uk](mailto:ianc@media-shed.co.uk)

### Advertising

Kessia Miller O20 3745 6815  
[kessia@media-shed.co.uk](mailto:kessia@media-shed.co.uk)

### Recruitment

Tim Porter O20 3137 2406  
[timp@media-shed.co.uk](mailto:timp@media-shed.co.uk)

### Unite health sector officers

National officers **Jacalyn Williams**  
and **Colenzo Jarrett-Thorpe**.  
Lead professional officers **Ethel Rodrigues**  
**Gavin Fergie** **Obi Amadi** **Jane Beach**  
and **Dave Munday**

© 2023 Community Practitioners' and Health Visitors' Association  
ISSN 1462-2815

The views expressed do not necessarily represent those of the editor nor of Unite-CPHVA.

Paid advertisements in the journal do not imply endorsement of the products or services advertised.

Any Unite-CPHVA member wishing to change their contact details must get in touch with their local Unite office.

